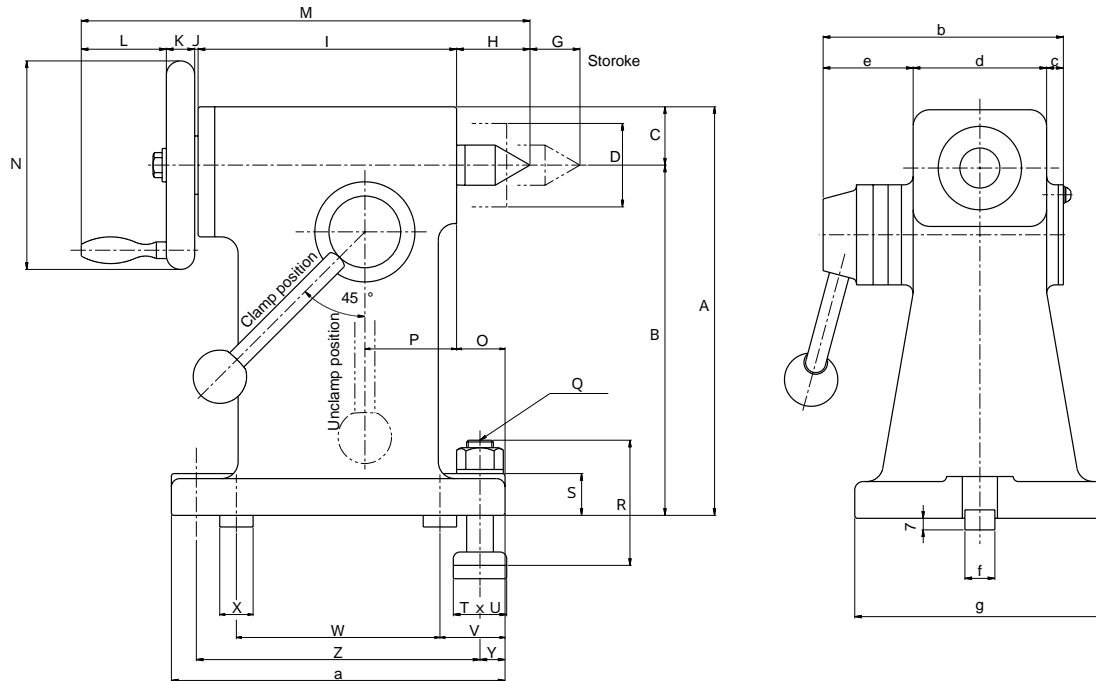


# TAIL STOCK-MANUAL TYPE (TC·THC)



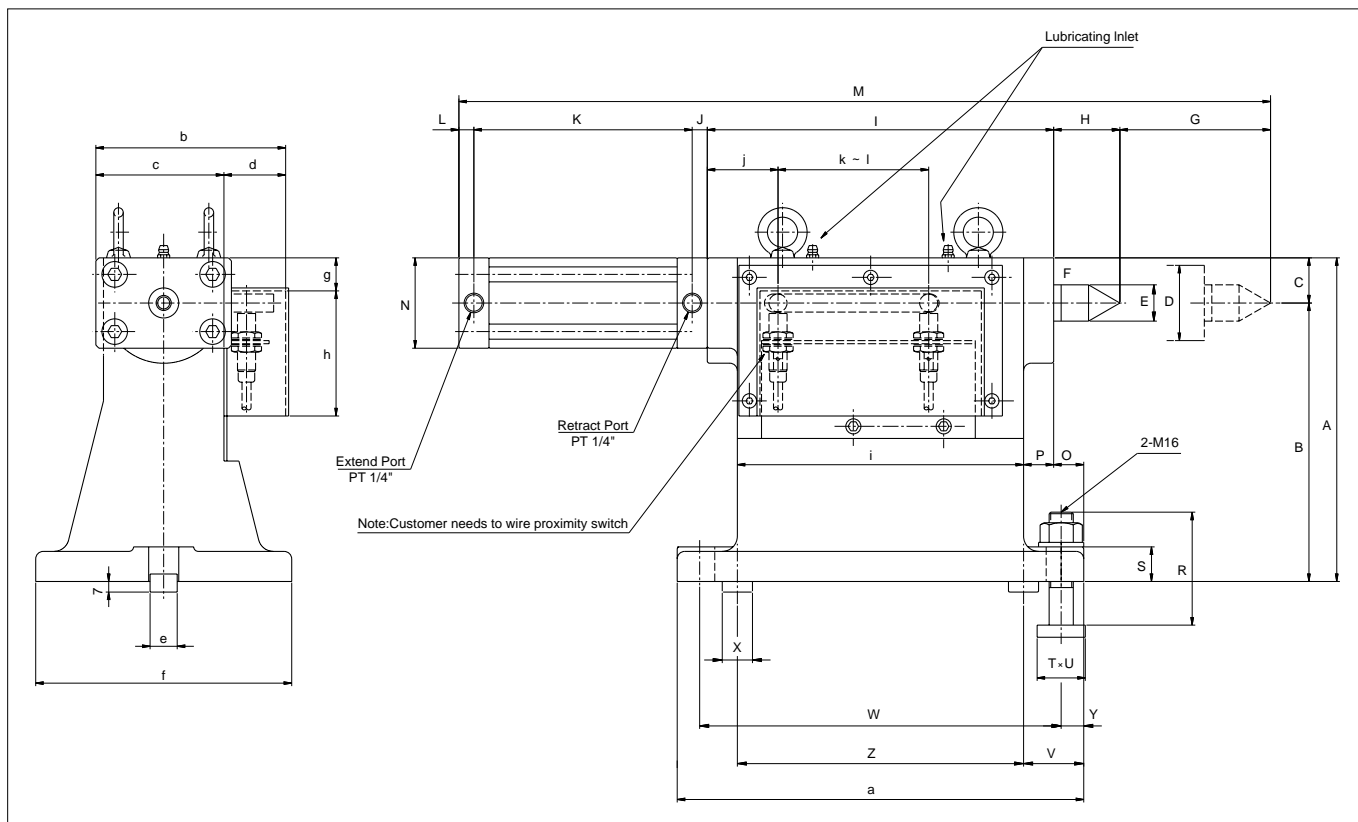
MODEL	A	B	C	D	E	F	G	H	I	J	K	L	M	N	O	P	Q	R	S	T	U
THC200	220	185	35	50	24.1	MT#3	30	44	155	2	17	51	269 ~299	125	29	55	M16	75	25	32	27
TC300	245	210	35	50	24.1	MT#3	30	44	155	2	17	51	269 ~299	125	29	55	M16	75	25	32	27
THC300	270	235	35	50	24.1	MT#3	30	44	155	2	17	51	269 ~299	125	29	55	M16	75	25	32	27
TC400	300	255	45	65	31.6	MT#4	60	52.5	215	2	20	64	353.5 ~413.5	140	20	75	M16	75	30	32	27
TC500	325	280	45	65	31.6	MT#4	60	52.5	215	2	20	64	353.5 ~413.5	140	20	75	M16	75	30	32	27
TC600	460	400	60	80	44.7	MT#5	65	70.5	300	8	18	83	479.5 ~544.9	160	15	100	M20	100	40	40	30

MODEL	V	W	X	Y	Z	a	b	c	d	e	f	g	APPLICABLE MODEL
THC200	39	122	20	15	170	200	144	10	80	54	18h7	150	MDH230 MDB230
TC300	39	122	20	15	170	200	144	10	80	54	18h7	150	MD320
THC300	39	122	20	15	170	200	144	10	80	54	18h7	150	MDB320 MDH320
TC400	39	172	20	15	220	250	160	8	100	52	18h7	180	MD400
TC500	39	172	20	15	220	250	160	8	100	52	18h7	180	MD500
TC600	50	215	20	20	275	315	191	8	125	58	22h7	300	MD630

# TAIL STOTCK-HYDRAULIC TYPE(TP•THP)

## SPECIFICATION

MODEL		THP200	TP300	THP300	TP400	TP500
MAXIMUM HYDRAULIC PRESSURE	Mpa	4.9	4.9	4.9	4.9	4.9
	kg/cm <sup>2</sup>	50	50	50	50	50
PRESSURE APPLICATION AREA	cm <sup>2</sup>	19.5	19.5	19.5	32.4	32.4
THRUST FORCE AT 1.96Mpa (20kg/cm <sup>2</sup> )	KN	3.9	3.9	3.9	6.4	6.4
	kg	393	393	393	648	648
OIL REQUIRED	cc	200	200	200	410	410



MODEL	A	B	C	D	E	F	G	H	I	J	K	L	M	N	O	P	Q	R	S	T	U
THP200	215	185	30	50	24.1	MT # 3	100	44	230	10	145	10	439 ~539	60	20	20	2-M16	75	23	32	27
TP300	240	210	30	50	24.1	MT # 3	100	44	230	10	145	10	439 ~539	60	20	20	2-M16	75	23	32	27
THP300	265	235	30	50	24.1	MT # 3	100	44	230	10	145	10	439 ~539	60	20	20	2-M16	75	23	32	27
TP400	295	255	40	65	31.6	MT # 4	120	52.5	280	10	173	51	566.5 ~686.5	80	20	20	2-M16	75	25	32	27
TP500	320	280	40	65	31.6	MT # 4	120	52.5	280	10	173	51	566.5 ~686.5	80	20	20	2-M16	75	25	32	27

MODEL	V	W	X	Y	Z	a	b	c	d	e	f	g	h	i	j	k	l	APPLICABLE MODEL
THP200	40	190	20	15	240	270	126	85	41	18h7	170	22	83	190	47	40	100	MDH230 MDB230
TP300	40	190	20	15	240	270	126	85	41	18h7	170	22	83	190	47	40	100	MD320
THP300	40	190	20	15	240	270	126	85	41	18h7	170	22	83	190	47	40	100	MDB320
TP400	42.5	235	20	15	290	320	150	110	40	18h7	220	26	108	240	52	40	120	MD400
TP500	42.5	235	20	15	290	320	150	110	40	18h7	220	26	108	240	52	40	120	MD500