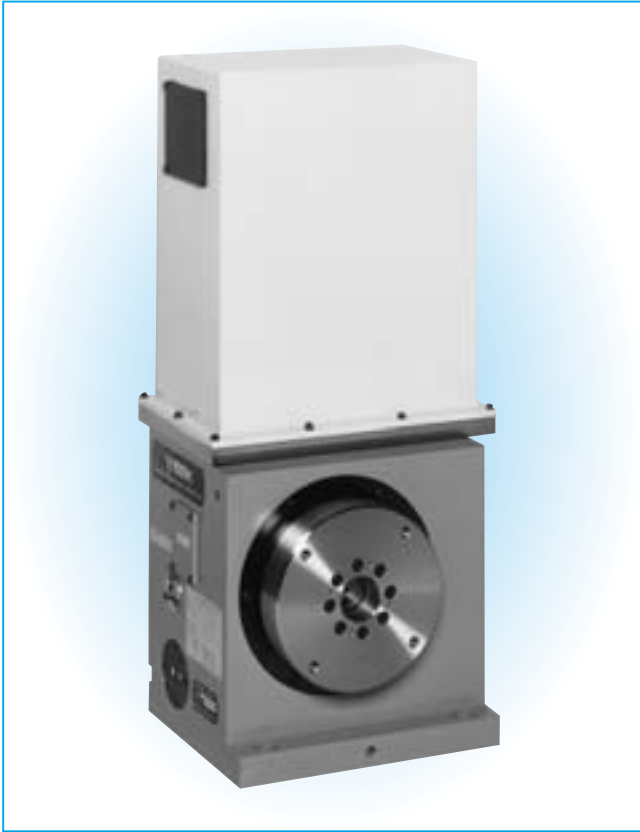


MDVi TYPE

SUPER HIGH SPEED TYPE

NC ROTARY TABLE



CHARACTERISTICS

High speed, high precision "nearly zero backlash" rotary tables

Large thru-hole especially suited for scroll cutting applications

Vertical top mounted motor

OPTIONS

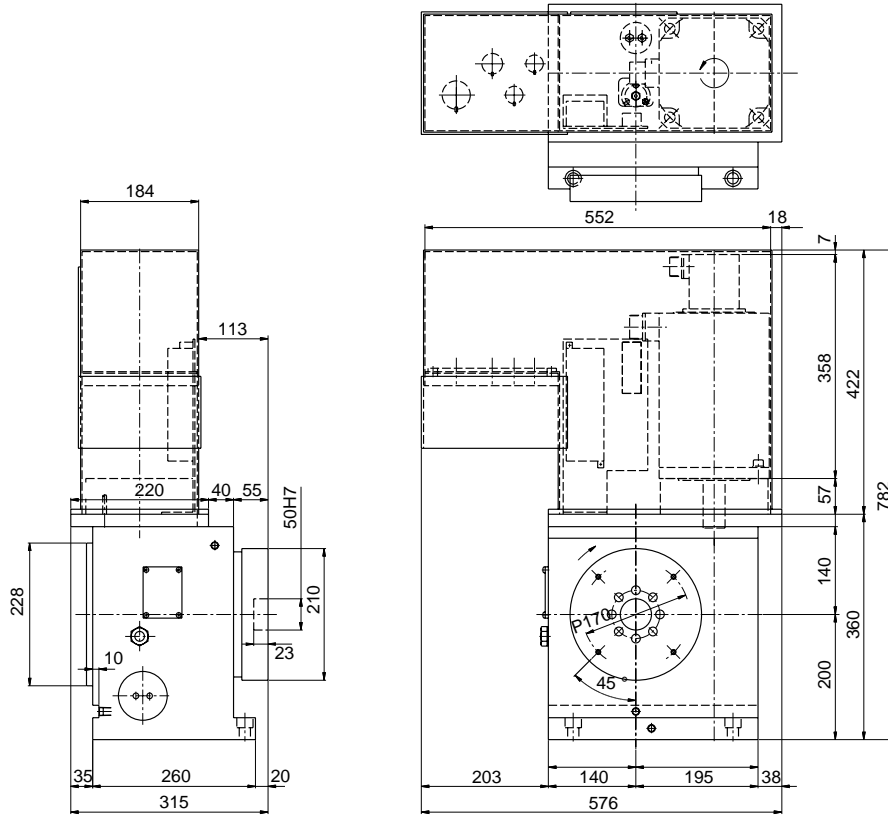
Diaphragm chuck

MDVi 216
MDVi 346

SPECIFICATION

ITEMS	MODEL		MDVi 216	MDVi 346
TABLE DIAMETER		mm	210	340
CENTER HEIGHT IN VERTICAL		mm	200	230
OVERALL HEIGHT IN VERTICAL		mm	782	805
THRU HOLE DIAMETER		mm		35
WIDTH OF GUIDE BLOCK		mm(h7)		
MOTOR(FANUC)			22/2000	22/2000
GEAR RATIO			1/6	1/12
MAX. R.P.M		r.p.m.	150	150
MIN. INDEXING UNIT		degree	0.001	0.001
INDEXING ACCURACY		sec	20	20
REPEATABILITY		sec	± 2	± 2
PERMISSIBLE LOAD (VERTICAL)		kg	100	120
MAX MACHINING FORCE		N-m	100.9	100.9
		kg-m	10.3	10.3
WEIGHT		kg	200	320

MDVi 216



MDVi 346

