

MDU TYPE

VERTICAL TYPE



Photo shows with Holder Clamp System(option).

NC ROTARY TABLE

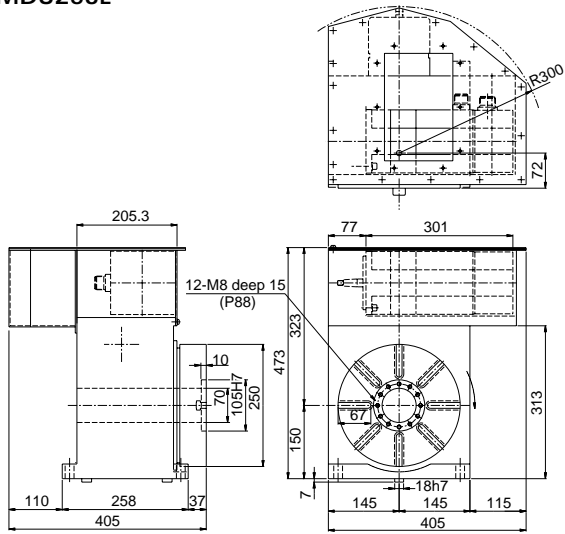
MDU 253R(L)
 MDU 322R(L)
 MDU 323R(L)
 MDU 400R(L)
 MDU 403R(L)
 MDU 500R(L)
 MDU 503R(L)
 MDU 630R(L)

SPECIFICATION

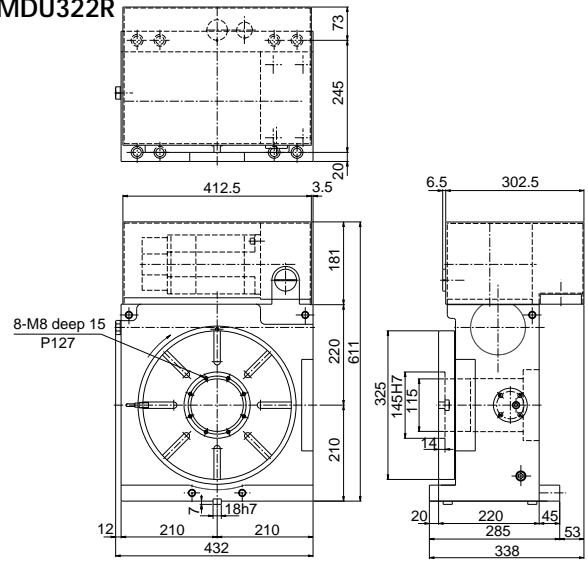
Note: () means that for higher indexing accuracy, the model with rotary scale built-in is available upon request.

ITEMS \ MODEL		MDU253R(L)	MDU322R(L)	MDU323R(L)	MDU400R(L)	MDU403R(L)	MDU500R(L)	MDU503R(L)	MDU630R(L)
TABLE DIAMETER	mm	250	325	325	400	400	500	500	635
CENTER HEIGHT IN VERTICAL	mm	150	210	210	255	255	280	280	400
OVERALL HEIGHT IN VERTICAL	mm	473	611	638	735	735	780	780	1018.3
THRU HOLE DIAMETER	mm	70	115	115	170	170	170	170	260
WIDTH OF T-SLOT	mm	12	14	14	14	14	18	18	18
WIDTH OF GUIDE BLOCK	mm(h7)	18	18	18	18	18	18	18	22
MOTOR(FANUC)		6/2000	6/2000	12/2000	12/2000	22/2000	12/2000	22/2000	22/2000
GEAR RATIO		1/60	1/120	1/60	1/180	1/60	1/180	1/60	1/360
MAX. R.P.M	r.p.m.	33.3	16.7	33.3	8.3	33.3	8.3	33.3	5.5
MIN. INDEXING UNIT	degree	0.001	0.001	0.001	0.001	0.001	0.001	0.001	0.001
INDEXING ACCURACY	sec	14(6)	12(6)	12(6)	12(6)	12(6)	12(6)	12(6)	12(6)
REPEATABILITY	sec	± 2(2)	± 2(2)	± 2(2)	± 2(2)	± 2(2)	± 2(2)	± 2(2)	± 2(2)
CLAMPING FORCE	N-m	764	2303	2303	4675	4675	4675	4675	5635
	kg-m	78	235	235	477	477	477	477	575
HYDRAULIC PRESSUER	M P a	4.9	4.9	4.9	4.9	4.9	4.9	4.9	4.9
	kg/cm ²	50	50	50	50	50	50	50	50
PERMISSIBLE LOAD (VERTICAL)	kg	120	150	150	350	350	350	350	800
MAX MACHINING FORCE	N-m	735	1117	1117	1470	1470	1470	1470	3136
	kg-m	75	114	114	150	150	150	150	320
WEIGHT	kg	130	225	230	350	360	390	400	1100

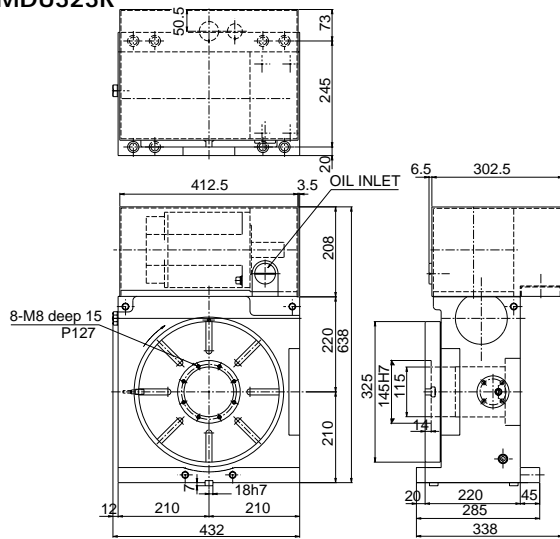
MDU253L



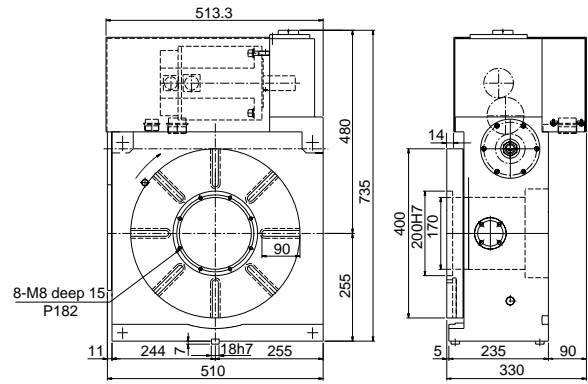
MDU322R



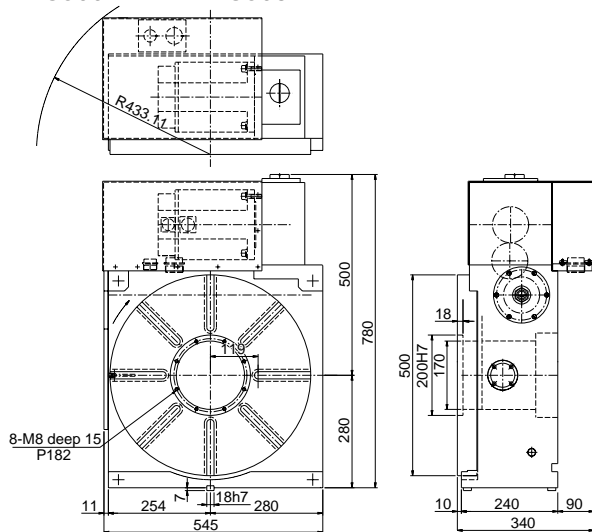
MDU323R



MDU400R MDU403R



MDU500R MDU503R



MDU630R

