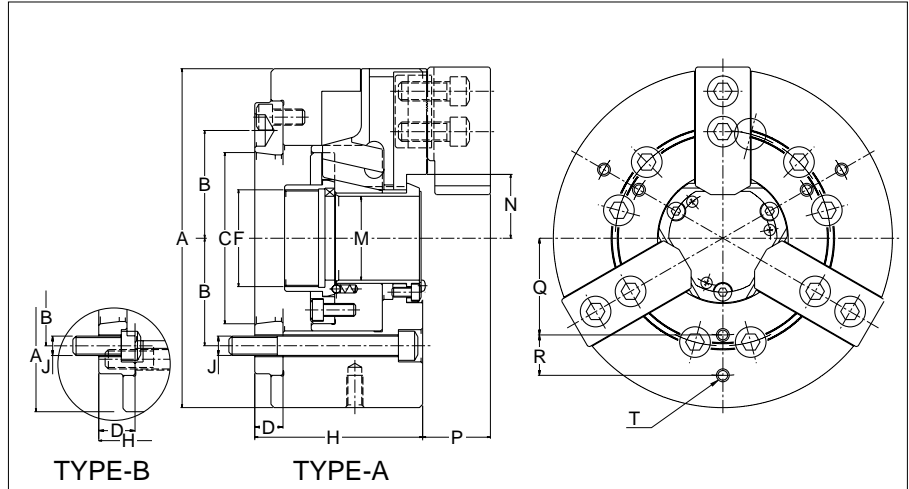


# ZA THRU-HOLE POWER OPERATED 3 JAW CHUCKS



Specification		Model	ZA5-5-34	ZA5-6-46	ZA6-8-52	ZA6-10-75B	ZA8-10-75	ZA8-12-85	ZA8-15-120B	ZA11-15-120	ZA11-18-120
Thru-hole dia	mm		34	46	52	75	75	85	120	120	120
Stroke of jaw	(mm in dia)		5.4	5.8	7.6	9	9	9	11.3	11.3	11.3
Stroke of piston	mm		10	13	17	20	20	20	25	25	25
Chucking dia	MAX mm		121.5	148.5	189	228.6	228.6	274.5	342.9	342.9	411.3
	MIN mm		20.7	12	21	26.5	26.5	50	75	75	75
Gripping force	KN		14.7	47	78.4	107.8	107.8	137.2	176.4	176.4	176.4
	kg		1500	4800	8000	11000	11000	14000	18000	18000	18000
Max draw-pull	KN		14.7	22.1	27	42.6	42.6	50	68.6	68.6	68.6
	kg		1500	2250	2750	4350	4350	5100	7000	7000	7000
Max speed	min <sup>-1</sup>		7000	6000	5000	4000	4000	3200	2500	2500	2000
GD <sup>2</sup>	N·m <sup>2</sup>		0.55	1.76	4.9	13.23	13.13	31.85	105.55	99.08	195.02
	kg·m <sup>2</sup>		0.056	0.18	0.5	1.35	1.34	3.25	10.77	10.11	19.9
Weight	kg		6.1	13	23.5	38.5	38.5	70	132	124	180
Applicable cylinder			ZKP100/34-10	ZKP125/46-13	ZKP150/52-17	ZKP170/75-20	ZKP170/75-20	ZKP200/85-25	ZKP230/120-30	ZKP230/120-30	ZKP230/120-30

Size		Model	ZA5-5-34	ZA5-6-46	ZA6-8-52	ZA6-10-75B	ZA8-10-75	ZA8-12-85	ZA8-15-120B	ZA11-15-120	ZA11-18-120
A			135	165	210	254	254	305	381	381	457
B			52.4	52.4	66.7	66.7	85.7	85.7	85.7	117.5	117.5
C			A5	A5	A6	A6	A8	A8	A8	A11	A11
D			16.8	22	17.5	30.5	25	30	60	35	35
F			M40 x P1.5	M55 x P1.5	M60 x P1.5	M85 x P2.0	M85 x P2.0	M93 x P2.0	M130 x P2.0	M130 x P2.0	M130 x P2.0
H			70	90	104	128.5	123	135	190	165	165
J			3-M10	6-M10	6-M12	6-M16	6-M16	6-M16	6-M20	6-M20	6-M20
M			34	46	52	75	75	85	120	120	120
N	MAX		28.8	32.5	39.5	52	52	60	79.5	79.5	79.5
	MIN		26.1	29.6	35.7	47.5	47.5	55.5	73.9	73.9	73.9
P			32	32	42	44	44	54	65	65	65
Q			-	45	60	80	80	85	100	100	120
R			-	25	25	30	30	45	60	60	75
T			-	6-M8deep12	6-M8deep15	6-M12deep18	6-M12deep18	6-M16deep20	6-M16deep25	6-M16deep25	6-M16deep25