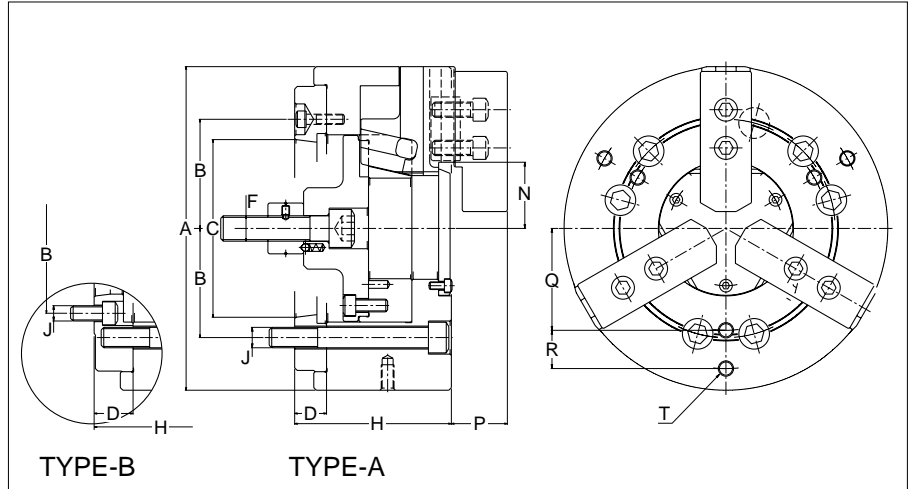


ZA-0 CLOSED CENTER POWER OPERATED 3 JAW CHUCKS



Model		ZA5-6-0	ZA6-8-0	ZA6-10-0B	ZA8-10-0	ZA8-12-0	ZA8-15-0B	ZA11-15-0	ZA11-18-0
Specification									
Stroke of jaw(mm in dia)		5.8	7.6	9	9	9	11.3	11.3	11.3
Stroke of piston mm		13	17	20	20	20	25	25	25
Chucking	MAX mm	148.5	189	228.6	228.6	274.5	342.9	342.9	411.3
	dia MIN mm	12	21	26.5	26.5	50	75	75	93
Gripping force	KN	47	78.4	107.8	107.8	137.2	176.4	176.4	176.4
	kg	4800	8000	11000	11000	14000	18000	18000	18000
Max draw-pull	KN	22.1	27	42.6	42.6	50	68.6	68.6	68.6
	kg	2250	2750	4350	4350	5100	7000	7000	7000
Max speed min ⁻¹		6000	5000	4000	4000	3200	2500	2500	2000
GD ²	N·m ²	1.76	4.9	13.13	13.13	31.85	105.55	99.08	185.22
	kg·m ²	0.18	0.5	1.34	1.34	3.25	10.77	10.11	18.9
Weight kg		13	24	38.5	38.5	70	132	124	172
Applicable cylinder		RNKP105-15	RC125-20	RNKP135-20	RNKP135-20	RCKP200-30	RCKP200-30	RCKP200-30	RCKP200-30

Model		ZA5-6-0	ZA6-8-0	ZA6-10-0B	ZA8-10-0	ZA8-12-0	ZA8-15-0B	ZA11-15-0	ZA11-18-0
Size									
A		165	210	254	254	305	381	381	457
B		52.4	66.7	66.7	85.7	85.7	85.7	117.5	117.5
C		A5	A6	A6	A8	A8	A8	A11	A11
D		14.5	17.5	30.5	25	30	60	35	35
F		M20 x P2.5	M20 x P2.5	M20 x P2.5	M20 x P2.5	M27 x P3.0	M27 x P3.0	M27 x P3.0	M27 x P3.0
H		82.5	104	128.5	123	135	190	165	165
J		6-M10	6-M12	6-M12	6-M16	6-M16	6-M16	6-M20	6-M20
N	MAX	32.5	39.5	52	52	60	79.5	79.5	79.5
	MIN	29.6	35.7	47.5	47.5	55.5	73.9	73.9	73.9
P		32	42	44	44	54	65	65	65
Q		45	60	80	80	85	100	100	120
R		25	25	30	30	45	60	60	75
T		6-M8deep12	6-M8deep15	6-M12deep18	6-M12deep18	6-M16deep20	6-M16deep25	6-M16deep25	6-M16deep25