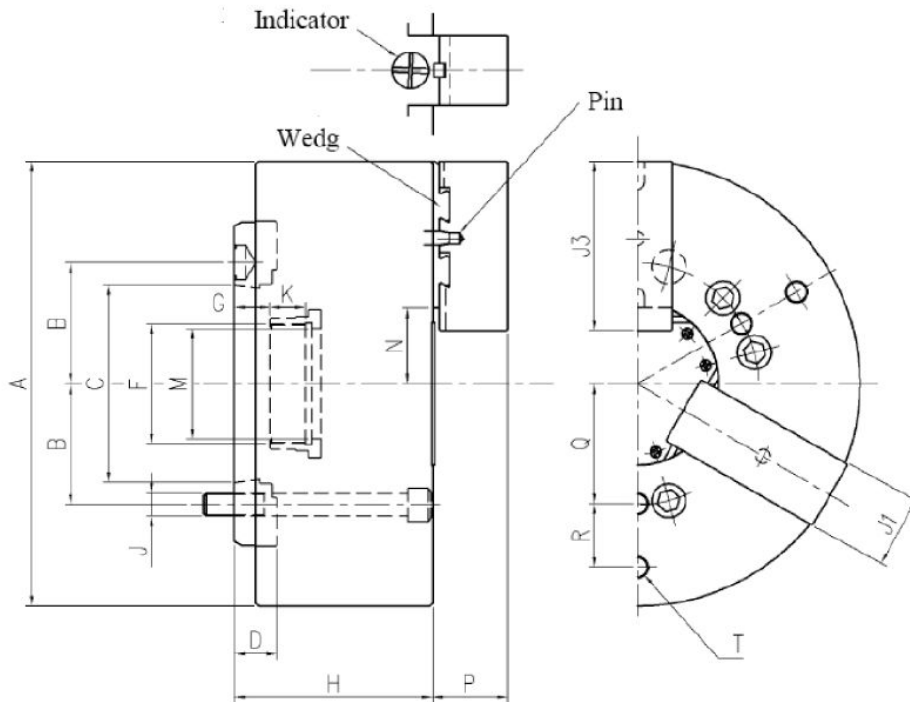


# QJC II

## “Quick Jaw Change Chuck”



Model#	Through Hole Diameter	Jaw Stroke	Pin stroke	Grip Diameter		Grip Force		Permissible Cylinder Thrust		Max Speed		DG2	Weight	Applicable Cylinder	Applicable Soft Jaw
				Max	Min	KN	Kg	KN	Kg	RPM	N-m <sup>2</sup>				
QJC-6	42	φ5.8	13	148.5	39	47	4800	22.5	2300	6000	1.37	0.14	10.3	ZKP125/46-13	1901-95-129
QJC-8	52	φ7.6	17	189	52	78.4	8000	27	2750	5000	4.11	0.42	19	ZKP150/52-17	1901-95-110
QJC-10	66	φ8.0	25	228.6	62	94.1	9600	37	3768	3600	10.76	1.1	33.8	ZKP170/66-25	1901-95-138

Model#	A	B	C	D	F	G		H	J	K	M	N		P	Q	R	T	J1	J3
						Max	Min					Max	Min						
QJC-6	165	52.4	A5	22	M45 P1.5	20	7	90	6-M10	15	42	28	25.1	32	45	25	6-M8 depth 12	27	63
QJC-8	210	66.7	A6	17.5	K58 P1.5	18.5	1.5	104	6-M12	21	52	35	31.2	42	60	25	6-M8 depth 15	34	79
QJC-10	254	85.7	A8	25	M76 P1.5	11	-14	123	6-M16	32	66	44.8	40.8	52	80	30	6-M12 depth 20	40	96

[www.mmkmatsumoto.com](http://www.mmkmatsumoto.com)