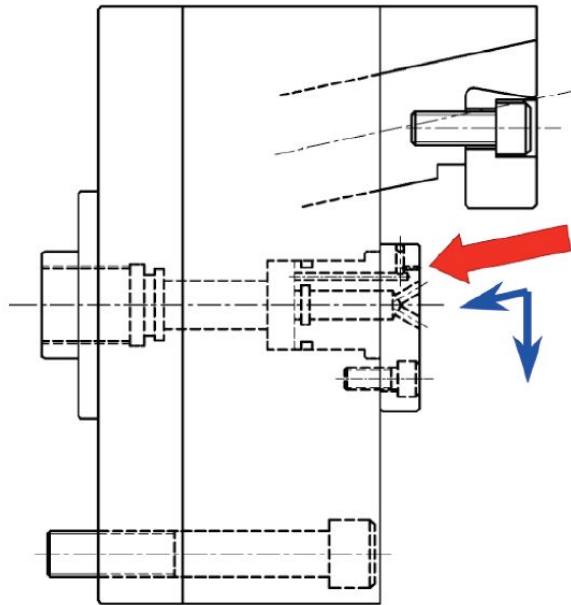


PBH Model

“Power Bar Chuck”

Features

- High accuracy-
- Clamping with pull down-
- High speed-

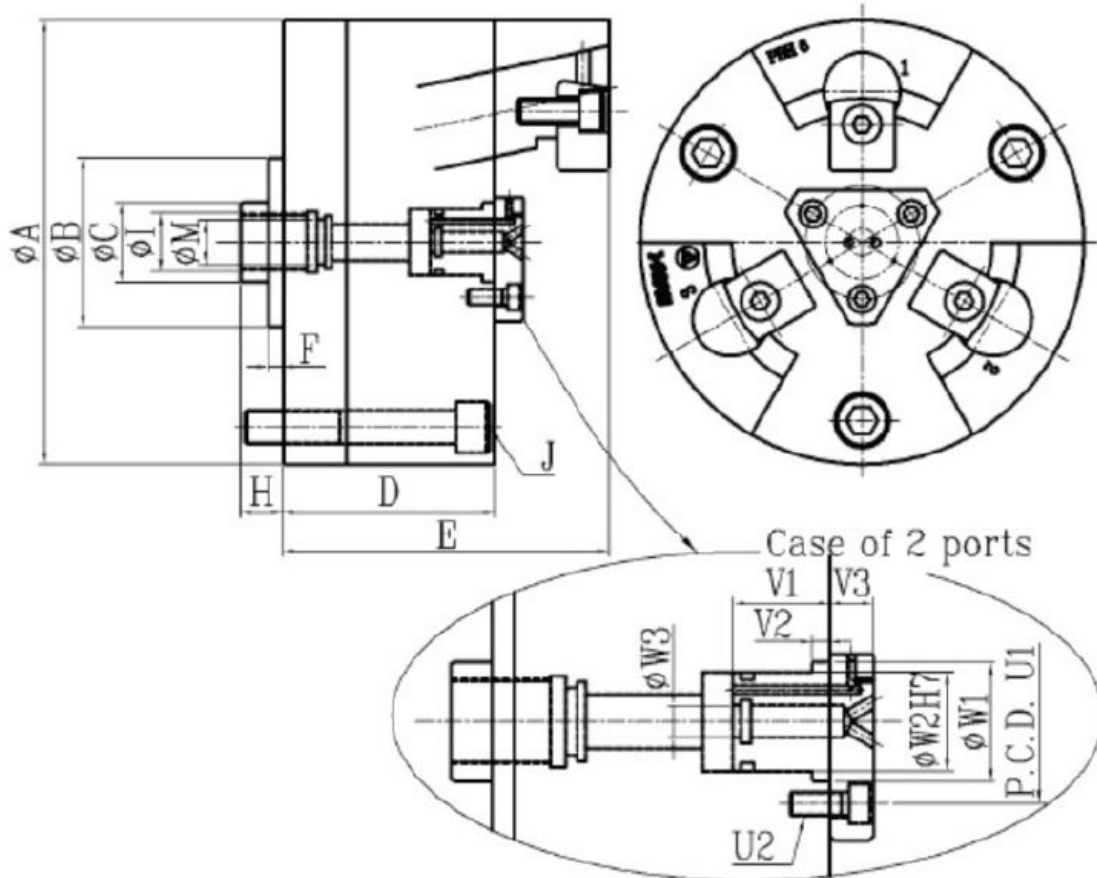


Model#	Jaw Stroke Diameter	Chucking Diameter		Max Gripping Force	Max Draw Pull	Max Speed	GD ²	Weight
		Soft Jaw	Hard Jaw					
	mm	mm	mm	KN (kgf)	KN (kgf)	Min ⁻¹	N-m (kg-m ²)	Kg
PBH-5	φ 3.4	65~80	15~60	53.98 (5500)	11.76 (1200)	7000	0.66 (0.067)	8
PBH-6	φ 4.2	86~100	20~80	92.12 (9400)	19.6 (2000)	6000	1.96 (0.2)	16
PBH-8	φ 4.2	120~140	60~110	114.66 (11700)	24.5 (2500)	4500	5.29 (0.54)	27
PBH-10	φ 4.2	150~180	100~145	137.2 (10000)	29.4 (3000)	3200	14.0 (1.43)	46
PBH-12	φ 4.2	190~230	120~200	176.4 (18000)	39.2 (4000)	2500	34.3 (3.5)	70
PBH-15	φ 4.2	240~290	220~280	176.4 (18000)	39.2 (4000)	2000	101.9 (10.4)	130

www.mmkmatsumoto.com

PBH Model

“Power Bar Chuck”



Model# Dimensions		PBH-5	PBH-6	PBH-8	PBH-10	PBH-12	PBH-15
A		130	162	210	250	320	400
B h6		60	80	80	80	ASA#8	380
C		24	32	40	45	50	60
D		72	90	100	110	130	137
E		103	130	155	165	200	241
F		5	7	7	7	-	-
G		20	30	30	30	40	40
H	Max	18	20	25	25	30	25
	Min	10	10	15	15	20	15
I		M20xP1.5	M25xP1.5	M25xP1.5	M28xP1.5	M32xP1.5	M42xP1.5
J		3-M8	3-M12	3-M16	3-M16	6-M16	3-M24
		P.C.D. 100	P.C.D. 130	P.C.D. 175	P.C.D. 210	P.C.D. 171.4	P.C.D. 330.2
M		φ16	φ20	φ20	φ21	φ23.5	φ33.5
U1		28	60	60	66	70	80
U2		3-M5	3-M5	3-M8	3-M8	3-M8	3-M8
V1		25	28	28	28	28	28
V2		5	5	5	5	5	5
V3		10	12	12	12	12	12
W1		16	35	40	40	50	60
W2		16	25	26	26	36	46
W3		5	8	8	8	8	8