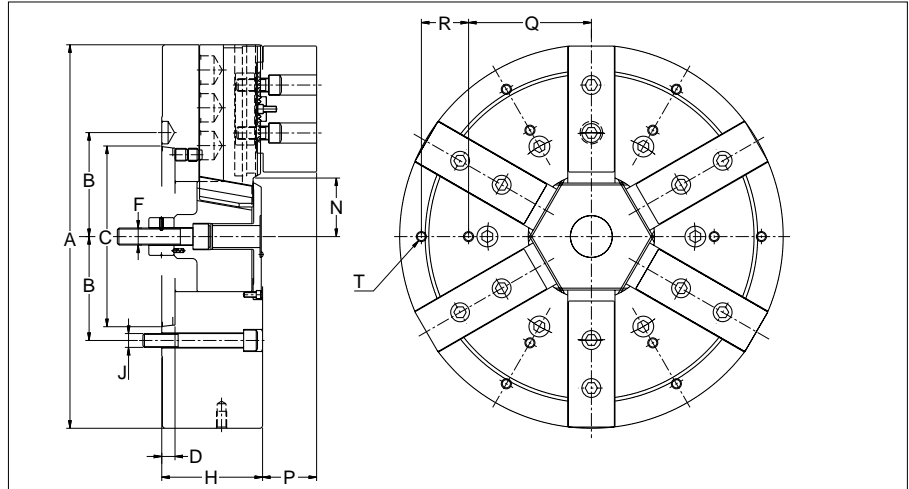


HH6JA

CLOSED CENTER POWER OPERATED 6 JAW CHUCKS

HH6J — — — — —

6 jaws type
spindle model
chuck size
MMK reference number



Model		HH6JA11-24	HH6JA20-24	HH6JA11-32	HH6JA15-36	HH6JA20-50
Specification						
Stroke of jaw(mm in dia)		12	12	17.5	12	17.5
Stroke of piston	mm	35	35	50	35	50
Chucking dia	MAX mm	540	540	731.7	820	1143
	MIN mm	90	90	125	134.8	200
Gripping force	KN	147	147	196	218.5	196
	kg	15000	15000	20000	22300	20000
Max draw-pull	KN	53.4	53.4	73.5	73.5	73.5
	kg	5450	5450	7500	7500	7500
Max speed	min ⁻¹	955	955	940	500	450
GD ²	N·m ²	626.22	626.22	1473.92	1587.2	13434.82
	kg·m ²	63.9	63.9	150.4	162	1370.9
Weight	kg	285	365	455	400	1700
Applicable cylinder		RCKP200-35	RCKP200-35	RCKP200-50	RCKP200-35	RCKP200-50

Model		HH6JA11-24	HH6JA20-24	HH6JA11-32	HH6JA15-36	HH6JA20-50
Size						
A		600	600	813	900	1270
B		117.5	231.8	117.5	165.1	231.8
C		A11	A20	A11	A15	A20
D		19.5	23	19.5	21	23
F		M27 × P3.0	M27 × P3.0	M27 × P3.0	M30 × P3.5	M30 × P3.5
H		160	160	180	160	201
J		6-M20	6-M24	6-M20	6-M22	6-M24
N	MAX	95	95	95	97	132
	MIN	89	89	89	94	123.2
P		70	70	69.5	70	70
Q		150	150	150	120	120
R		100	45	150	75	75
T		12-M16deep30	12-M16deep30	12-M16deep30	12-M16deep25	12-M16deep25